

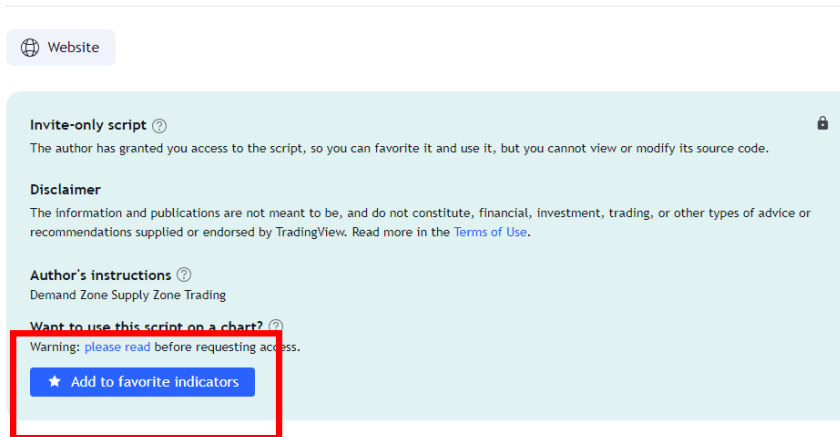
PBX TrendZ V1.0

Manual

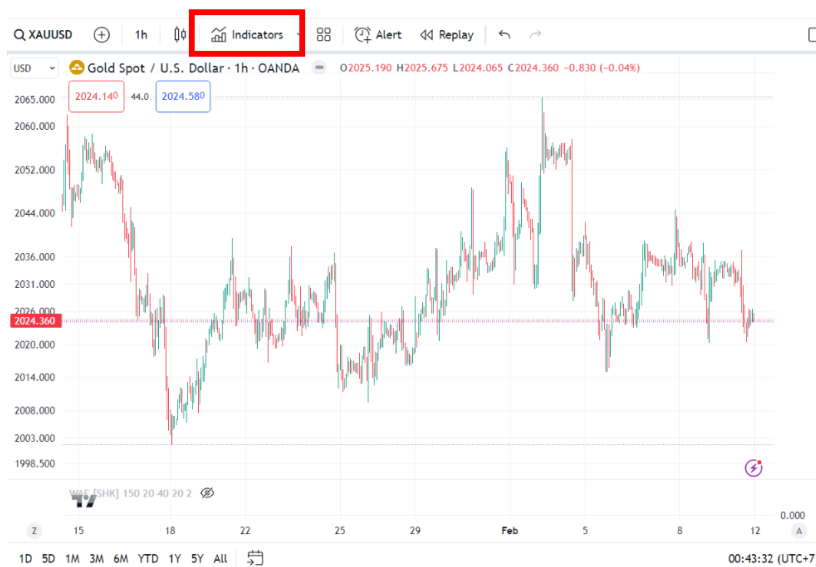


How to Add Indicators

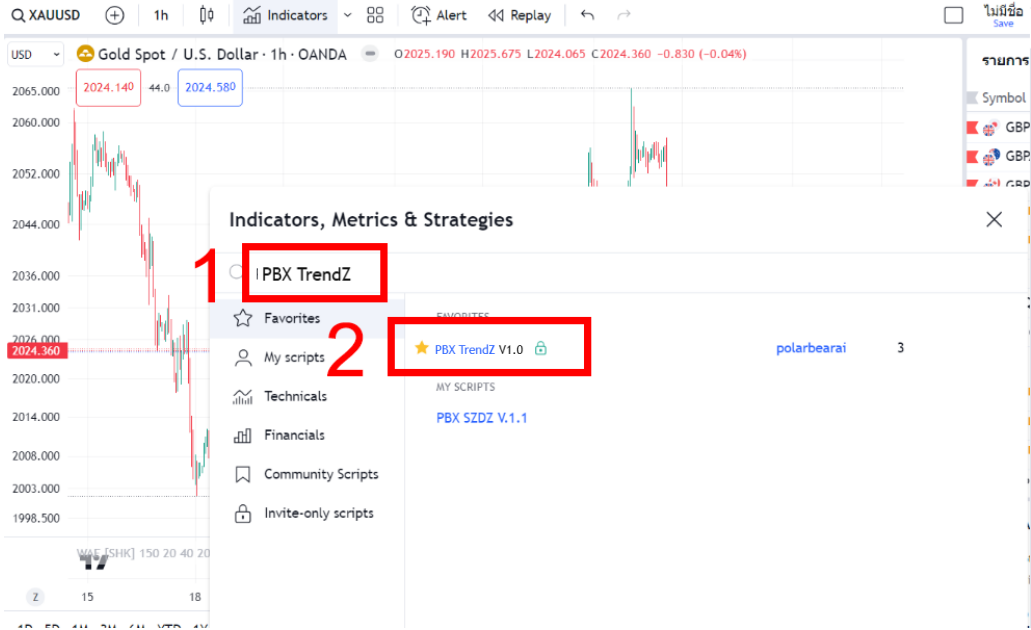
1. Go to link <https://www.tradingview.com/script/rQdq7LkC-PBX-TrendZ-V1-0/>
2. Scroll down and click Add to favorite indicators.



3. Go back to the chart page and click **Indicators**.

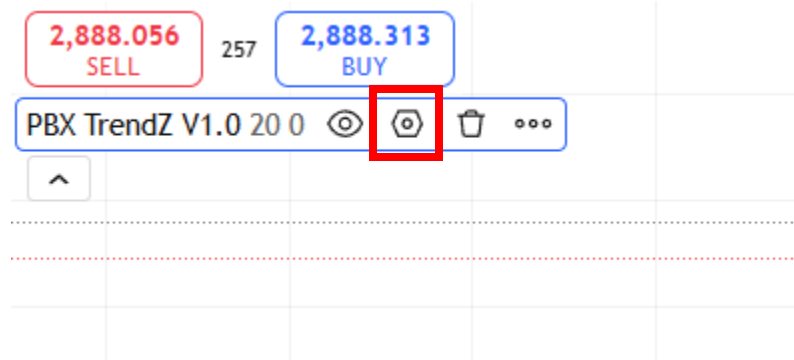


4. Search PBX TrendZ in box number 1 as shown in the picture.
5. Click a box number 2 to add indicators to the chart.

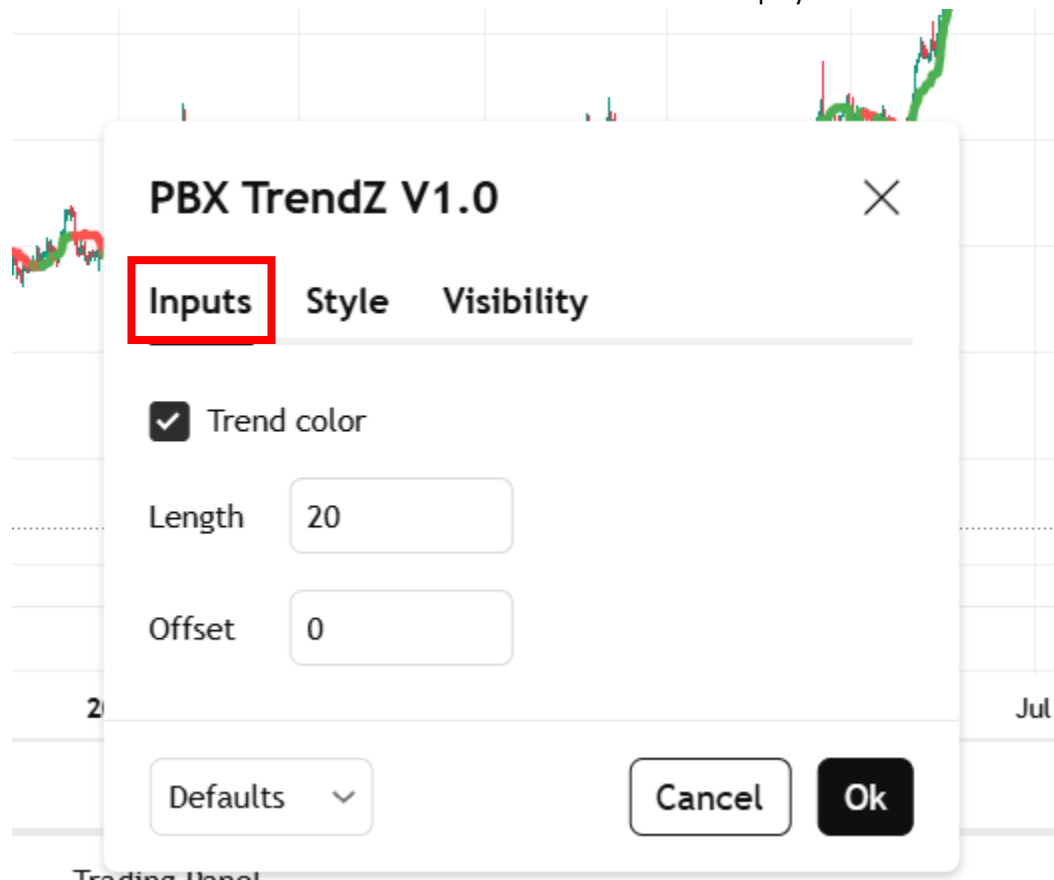


How to Set up

1. Open the settings window by pressing the gear icon behind the indicators name to open the settings window.

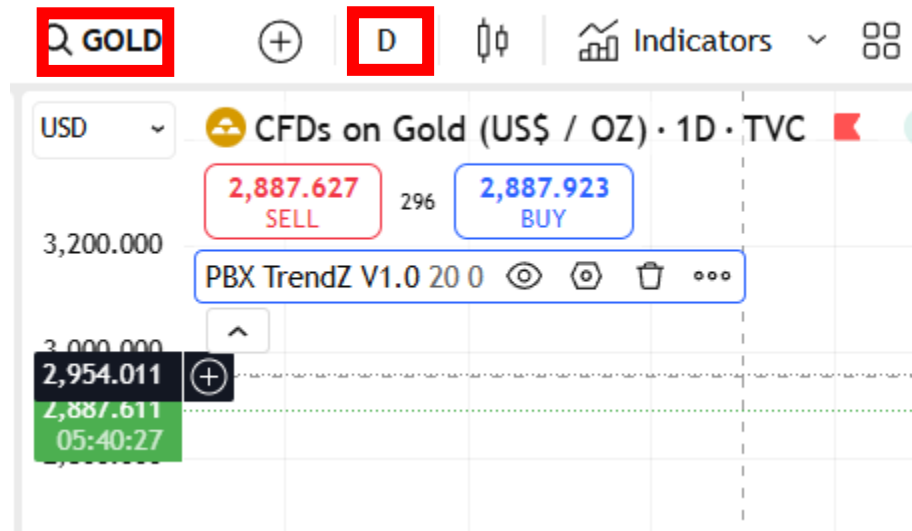


2. Select Input.
3. **Length** is the number of historical candlesticks used in the calculation.
4. **Offset** is the number for shift candle to display.

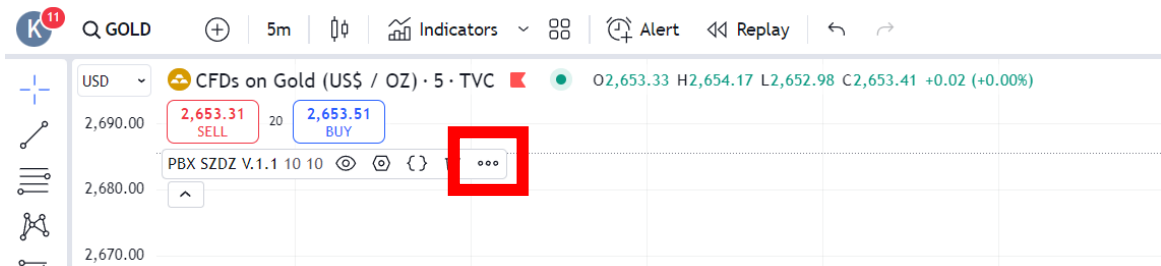


How to add alert in trading view

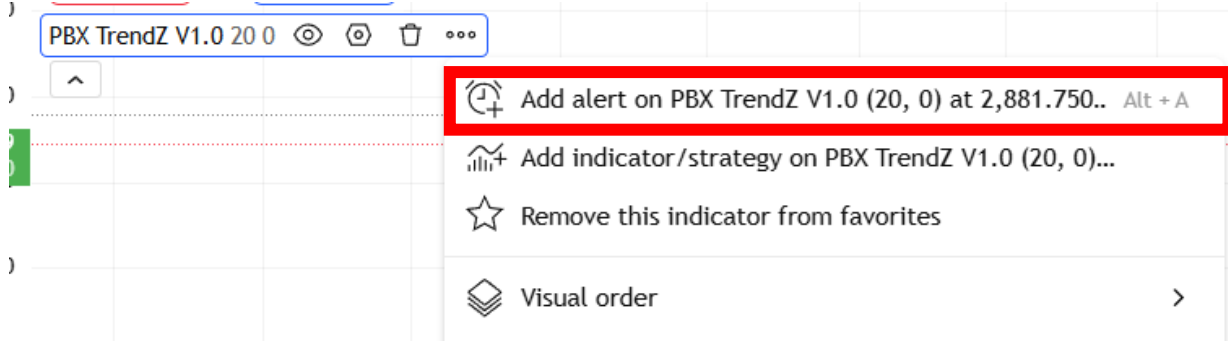
1. Select symbol and time frame.



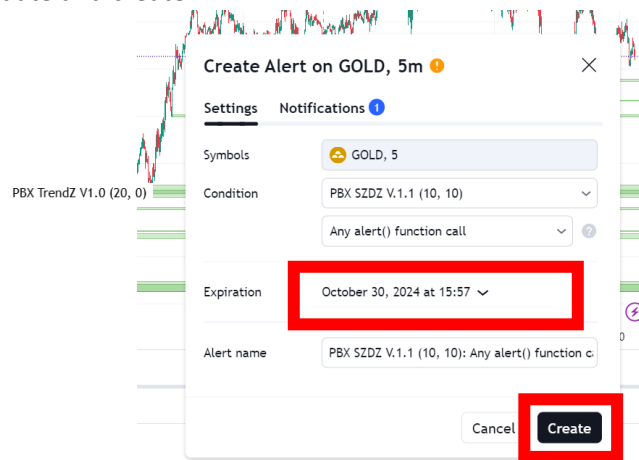
2. Open the menu window by pressing the dot icon behind the indicators name to open the menu window.



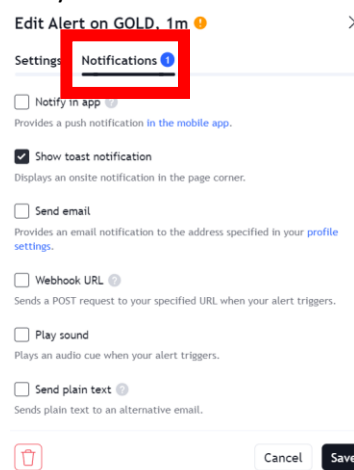
3. Click add alert Set your



4. Set your Expiration date and create



5. You can choose how to Notifications if you want.



6. You can check alert by clock image menu and choose log.

