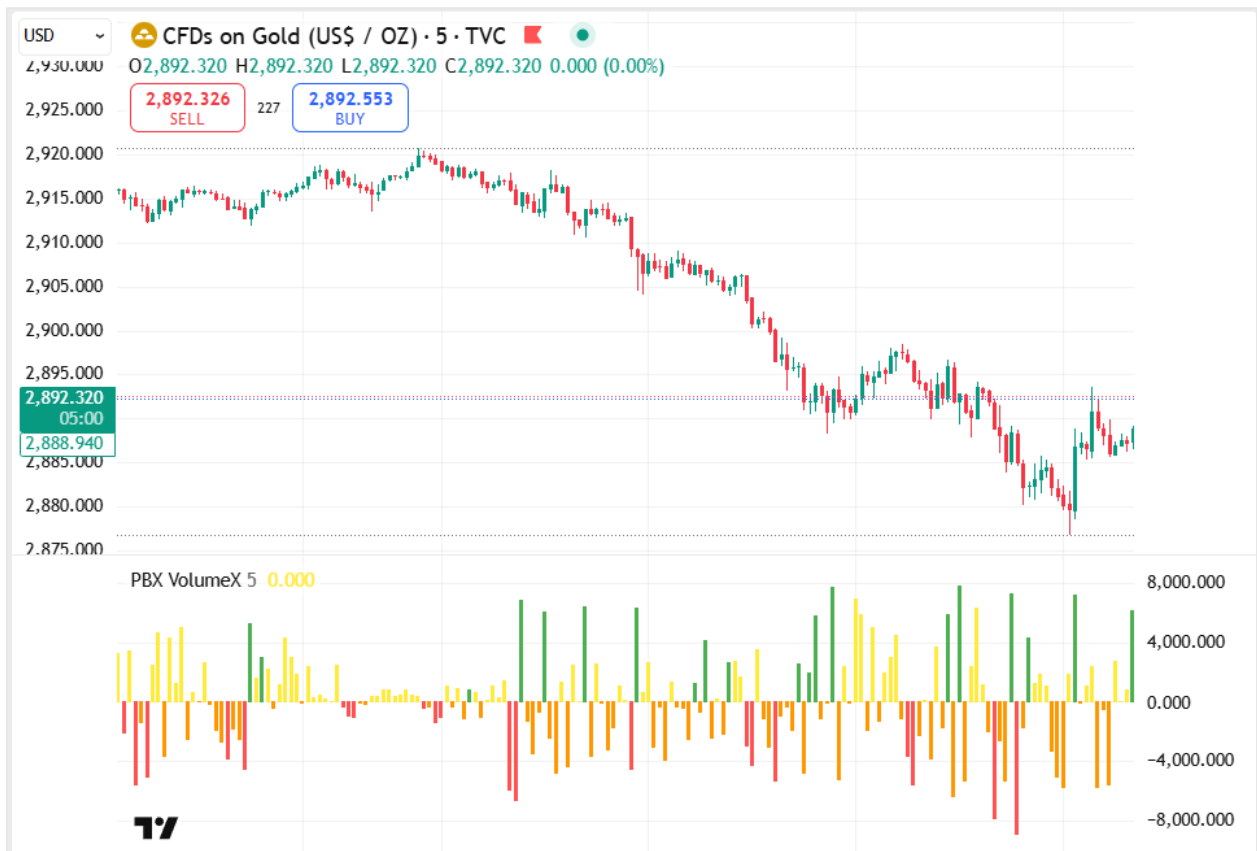


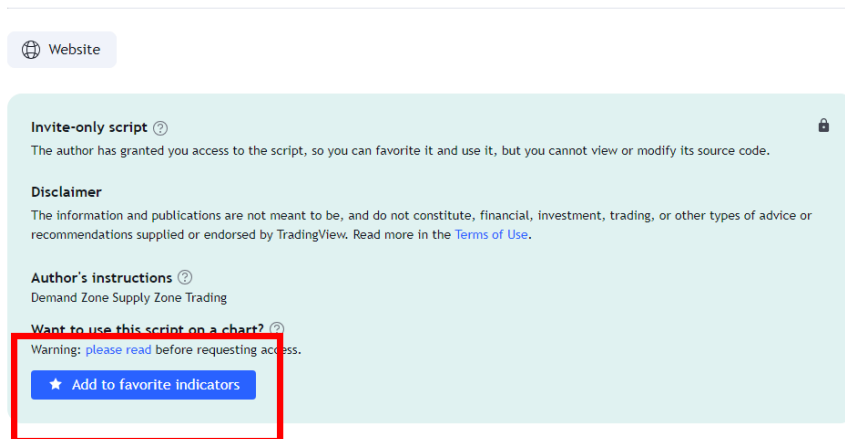
PBX VolumeX V1.0

Manual

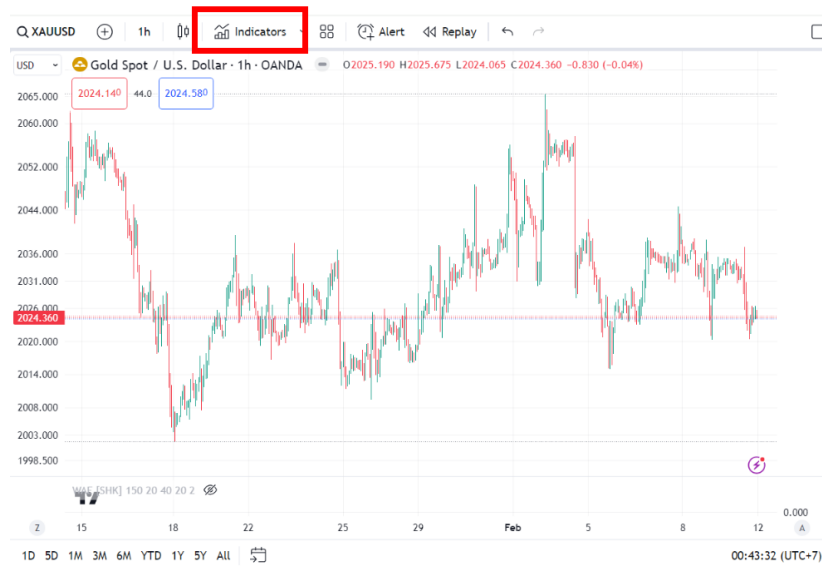


How to Add Indicators

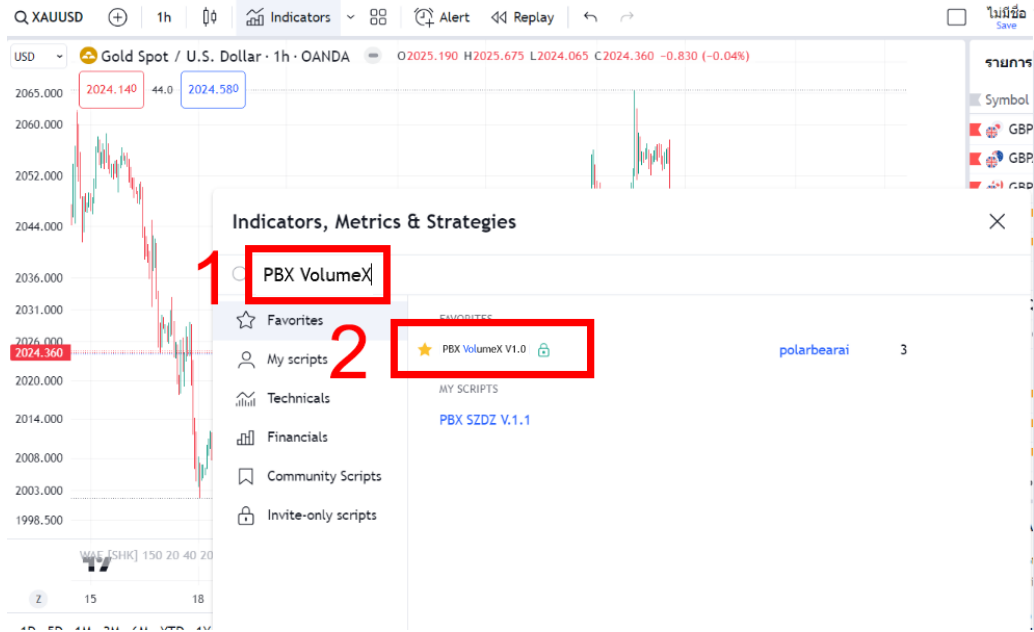
1. Go to link <https://www.tradingview.com/script/Oq1iNiOl-PBX-VolumeX-V1-0/>
2. Scroll down and click Add to favorite indicators.



3. Go back to the chart page and click **Indicators**.

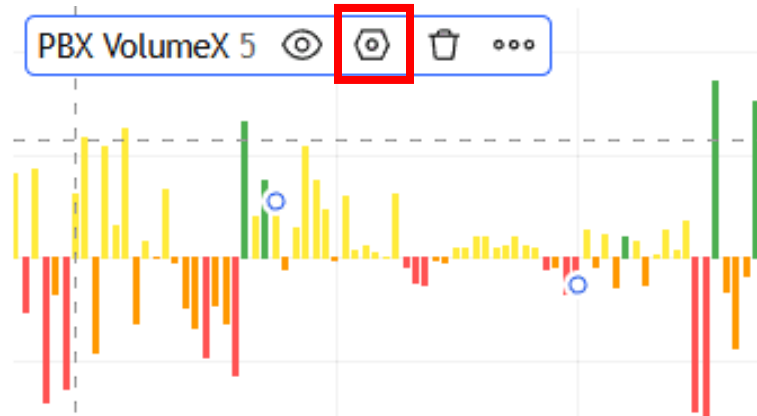


4. Search PBX VolumeX in box number 1 as shown in the picture.
5. Click a box number 2 to add indicators to the chart.



How to Set up

1. Open the settings window by pressing the gear icon behind the indicator name to open the settings window.



2. Select Input.
3. **MA Length** is the number of historical candlesticks used in the calculation.

