

PBX SZDZ V1.1

Manual Installation



How to Add Indicators

1. Go to link <https://www.tradingview.com/script/9WMdtfOa-PBX-SZDZ-V-1-1/>
2. Scroll down and click Add to favorite indicators.

Bands and Channels

0 14

Demand Zone and Supply Zone Trading

Website

Invite-only script ⓘ

The author has granted you access to the script, so you can favorite it and use it, but you cannot view or modify its source code.

Disclaimer

The information and publications are not meant to be, and do not constitute, financial, investment, trading, or other types of advice or recommendations supplied or endorsed by TradingView. Read more in the [Terms of Use](#).

Author's instructions ⓘ

Demand Zone Supply Zone Trading

Want to use this script on a chart? ⓘ

Warning: [please read](#) before requesting access.

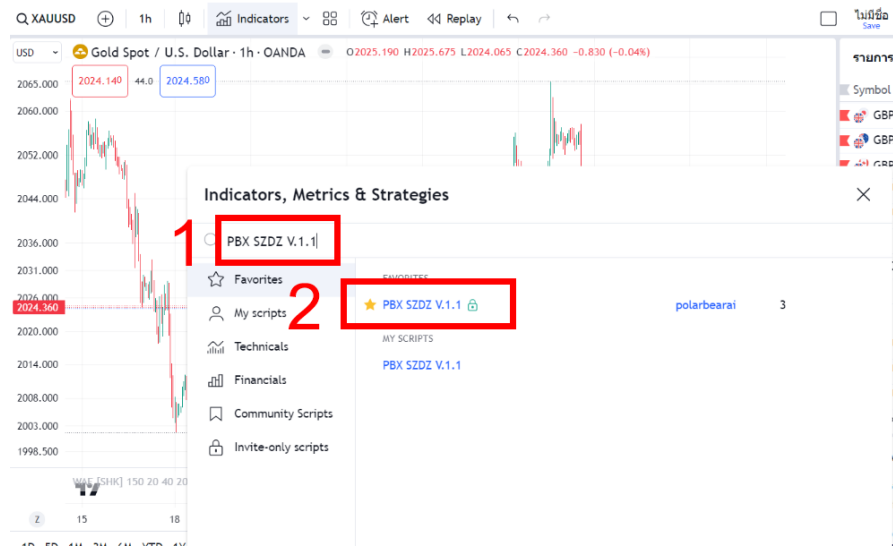
★ Add to favorite indicators

3. Go back to the chart page and click **Indicators**.



4. Search PBX SZDZ V.1.1 in box number 1 as shown in the picture.

5. Click a box number 2 to add indicators to the chart.





How to Settings

1. Open the settings window by pressing the gear icon behind the Indicators name to open the settings window.



2. Select Input.
3. **Pivot Length** is the number of historical candlesticks used in the calculation.
 - a. Zone will be created from the historical calculation that has been set, for example Pivot Length = 10 will look at the past 10 candlesticks. If the conditions are met, a Zone will be created.
4. **Max_line_Show** is the maximum number of zones displayed. For example, Max_line_Show = 10 will show up to 10 green zones and show up to 10 red zones.

The image shows a dialog box titled "PBX SZDZ V.1.1" with a close button (X) in the top right corner. The dialog has three tabs: "Inputs" (highlighted with a red box), "Style", and "Visibility". Under the "Inputs" tab, there are four input fields: "Pivot Length" with a value of 10, "Max_lines_Show" with a value of 10, "Average Line Style" with a dropdown menu showing a horizontal line and a downward arrow, and "Average Line Width" with a value of 1. At the bottom of the dialog, there is a "Defaults" dropdown menu, a "Cancel" button, and an "Ok" button.